

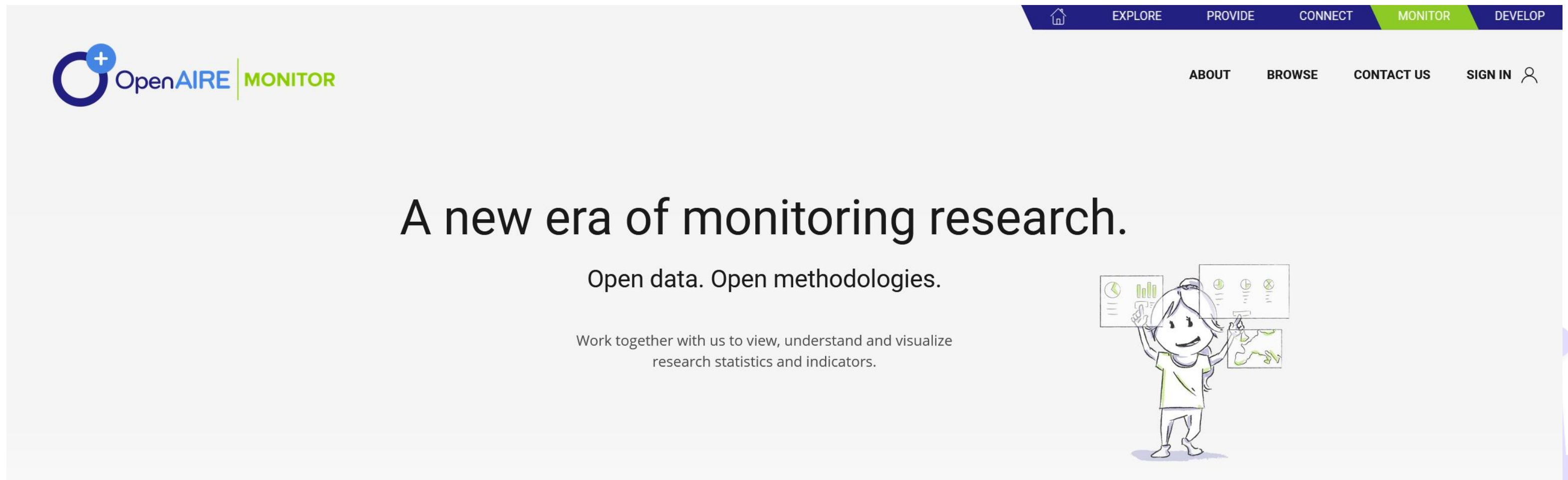
Harry Dimitropoulos, Ioanna Grypari  
Athena Research Center



## Personalized Research Monitoring

# OpenAIRE Monitor

[monitor.openaire.eu](https://monitor.openaire.eu)



The screenshot shows the homepage of the OpenAIRE Monitor website. At the top, there is a navigation bar with a home icon and links for EXPLORE, PROVIDE, CONNECT, MONITOR (highlighted in green), and DEVELOP. Below this, the OpenAIRE MONITOR logo is on the left, and navigation links for ABOUT, BROWSE, CONTACT US, and SIGN IN (with a user icon) are on the right. The main content area features the headline "A new era of monitoring research." followed by the sub-headline "Open data. Open methodologies." and the text "Work together with us to view, understand and visualize research statistics and indicators." To the right of this text is a cartoon illustration of a person holding up several data charts and graphs.

# Why? bringing leadership and disruption

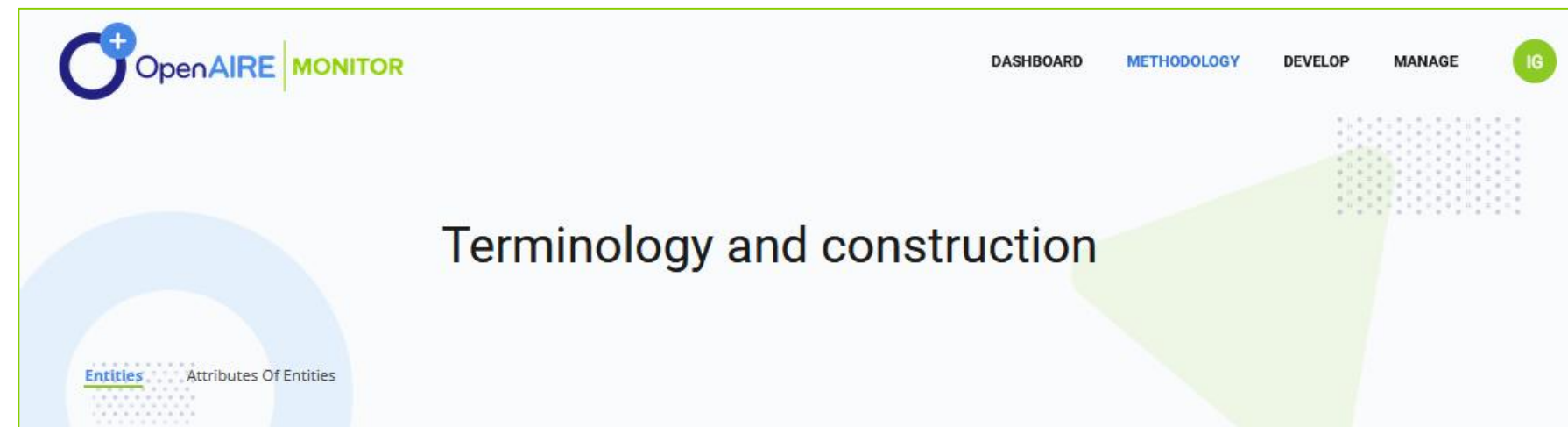
- **Tailor-made monitoring of research activities & their impact**
  - Funders – Institutions – Research Infrastructures
- **Gain understanding on research funding pathways towards open science and societal impact**
  - What has worked? What not? Reveal hidden potential
- **Compare across different levels of interest**
- **Turn data into insights**
- **Promote good practices**
- **Showcase your performance**

*monitoring*   *policy-making*  
*story-telling*   *reporting*  
*analysis*

# How? It's all about open data

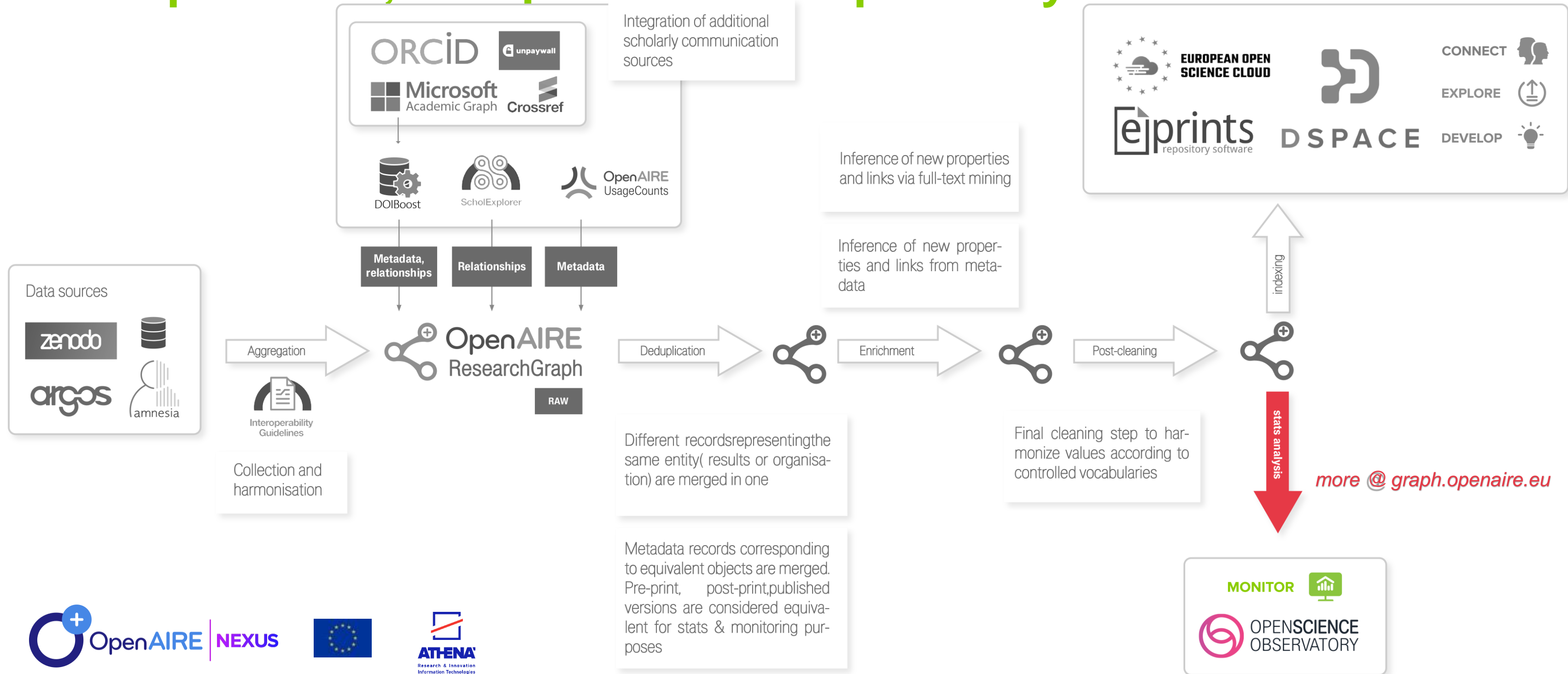
## Completeness, transparency and replicability

- Built on the OpenAIRE Research Graph
  - Linked scholarly information from open initiatives around the world. *Beyond publications.*
- Based on open science principles
  - Open data sources, Open APIs
  - Well documented metrics and indicators.
- Customization for different users
  - Indicators development & visualizations to meet requirements



# How? It's all about open data

## Completeness, transparency and replicability



# What?

- **on-demand** monitoring tool where users can
  - **create** their own monitoring dashboard
    - to **track** research activities (e.g. projects) and their **impact** (across multiple dimensions), or
  - **view** the (public) dashboards of other stakeholders
- **one-to-one customization & user support**

# What?

- **Collection of metrics & indicators**
  - Well documented, reliable, based on **OpenAIRE Research Graph**
  - Downloadable data and visualizations
  - Filtering functionality
- **Invite team members to view or edit dashboard**
- **Separate**
  - **Public** indicators for external stakeholders
  - **Restricted** indicators for team-members/internal monitoring
  - **Private** indicators for “work in progress”
- **Browse, download & compare indicators of other stakeholders**

# Indicators Roadmap (February 2022)

- **research output** (publications, datasets, software, other)
- **open science indicators**
  - different openness metrics
  - F.A.I.R. principles
  - Plan S compatibility & transformative agreements
  - APCs
- **impact**
  - network & collaborations
  - usage stats, citations
  - SDGs (*later on...*)

**coming soon!!**  
fields of study /  
research areas



# Get your own dashboard!



0. Starting from the OpenAIRE RESEARCH GRAPH



1. Provide us some information



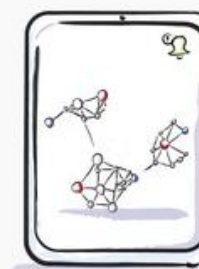
2. We get the ball rolling



3. You validate



4. You set up your portal



5. You track, monitor, report

# Contact us!

- **Funders**

- **Harry Dimitropoulos** → [harryd@di.uoa.gr](mailto:harryd@di.uoa.gr)

- **Institutions**

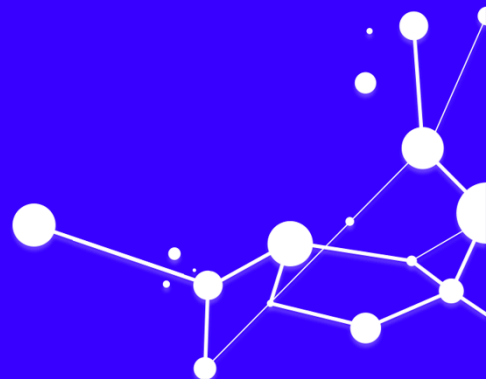
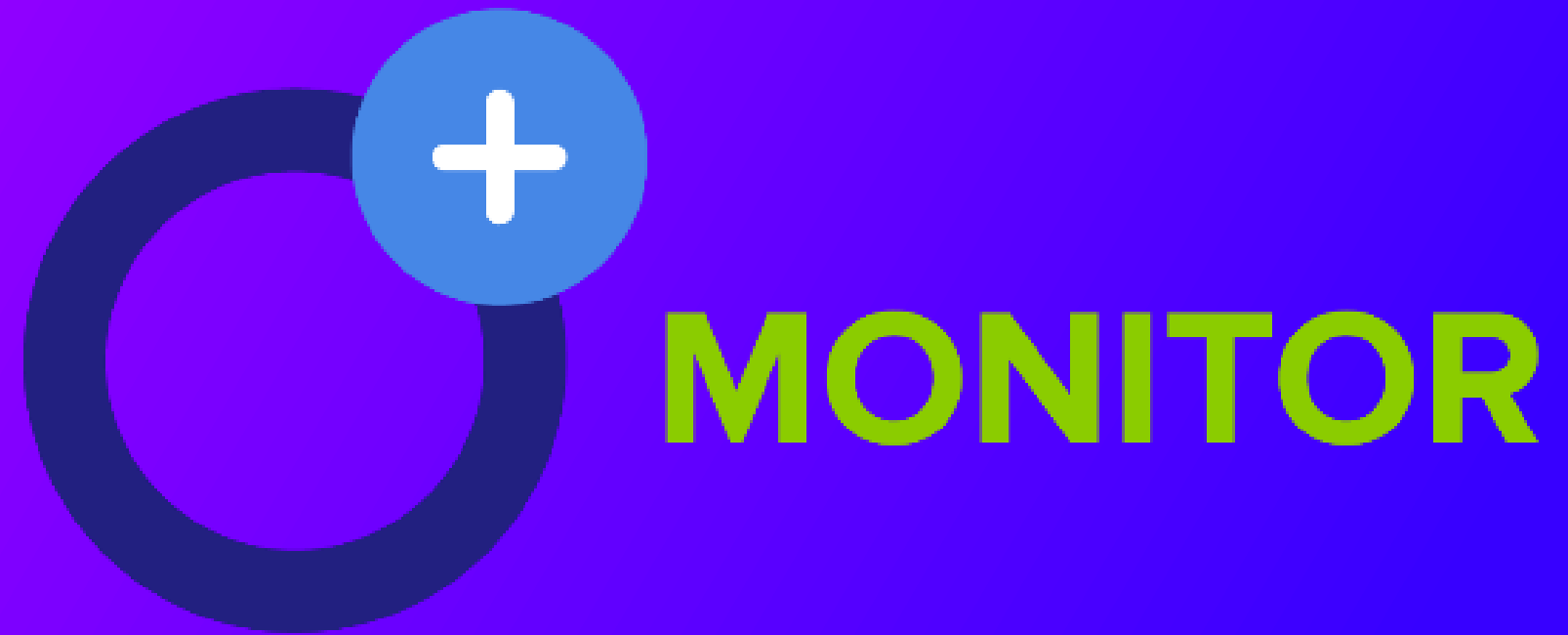
- **Ilaria Fava** → [fava@sub.uni-goettingen.de](mailto:fava@sub.uni-goettingen.de)

- **Research Infrastructures**

- **Alessia Bardi** → [alessia.bardi@isti.cnr.it](mailto:alessia.bardi@isti.cnr.it)

- **Overall (complaints!)**

- **Ioanna Grypari** → [igrypari@athenarc.gr](mailto:igrypari@athenarc.gr)





@openaire\_eu  
#OpenAIRE-Nexus

THANK YOU

**Ioanna Grypari**  
igrypari@athenarc.gr

