



Eli Papadopoulou
ATHENA Research Center



The DMP Landscape and Argos New features



OpenAIRE Tech Clinic | 28 Feb 2022



Argos



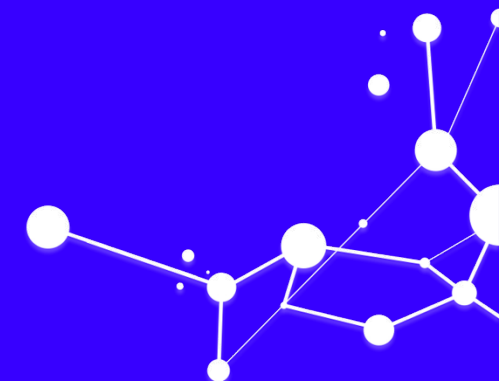
an **open source, configurable and extensible** tool for **planning Research Data Management (RDM)** activities according to **Open Access & FAIR** data policies.

Website: <https://argos.openaire.eu/>

~2000 users (growing)

- Online or ad-hoc installation
- Free to use for researchers
- Available in EOSC

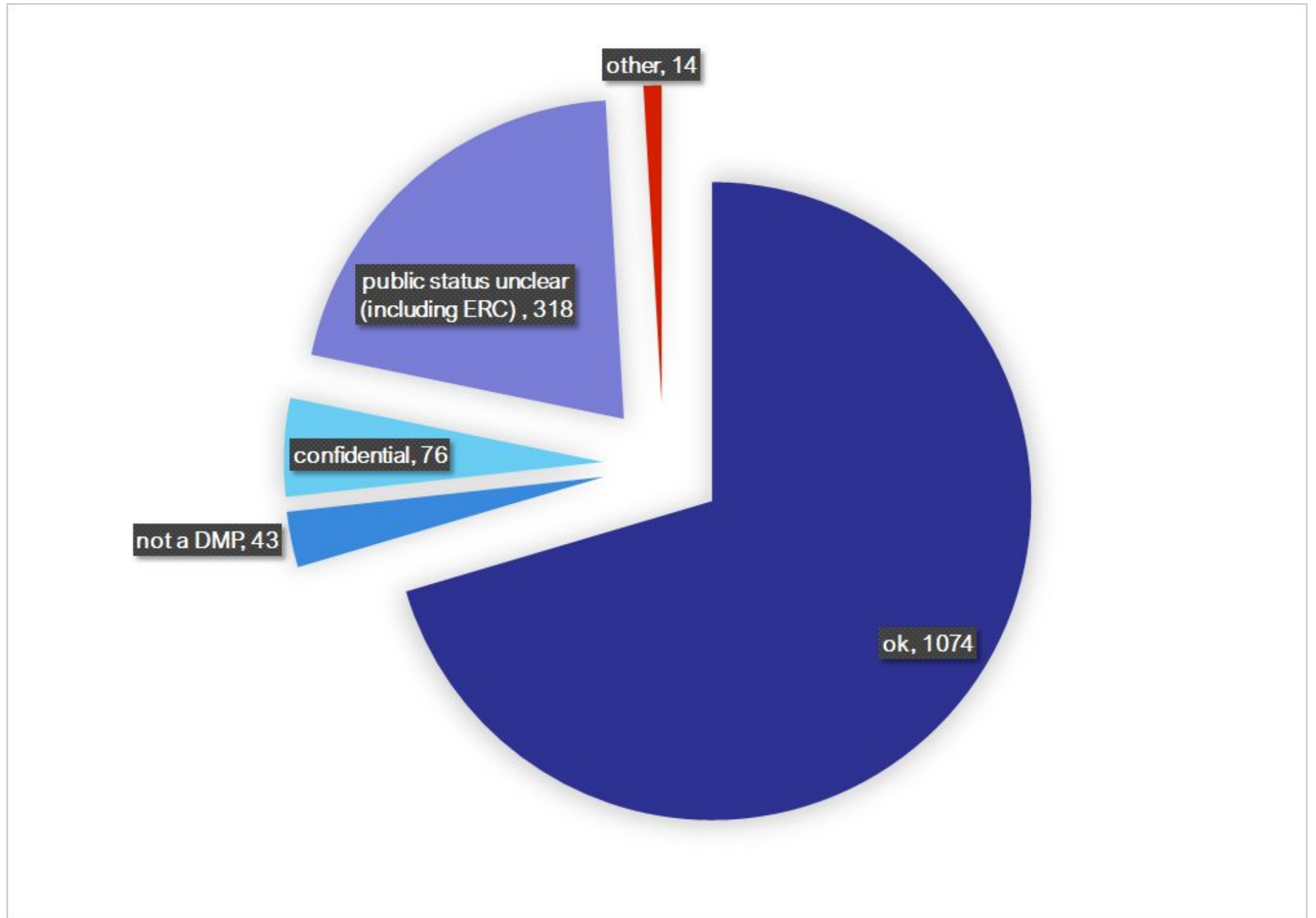
Landscape & Argos



DMPs distribution

Public DMPs (more than 1500) available through CORDIS

-> unclear how they could be re-distributed



Argos deposits

Back

DMP **DMP For Grant : Open Access Infrastructure**

Member Version 0 Edited : May 22, 2020 FINALIZED

Grant

Open Access Infrastructure for Research in Europe

Researchers

Description

Datasets used

Horizon 2020 Dataset Description

zenodo Search Upload Communities elli.libd@gmail.com

Type

- Publication (1432196) -
 - Article (916782)
 - Taxonomictreatment (381584)
 - Conferencepaper (58649)
 - Other (15487)
 - Report (13859)
 - Book (9298)
 - Deliverable (8847)
 - Section (8830)
 - Thesis (6455)
 - Preprint (4811)
 - Workingpaper (4077)
 - Technicalnote (1734)
 - Proposal (528)
 - Softwaredocumentation (410)
 - Milestone (285)
 - Datamanagementplan (213)
 - Annotationcollection (119)
- Image (738498) +
- Dataset (140620)
- Software (71420)
- Presentation (27557)
- Other (11312)
- Poster (10940)
- Video (5114)
- Lesson (3285)
- Physicalobject (366)

has been compiled with the collaborative work among the coordinator and the consortium partners who are involved in data collection, production and processing. The

Uploaded on February 17, 2022.

December 31, 2021 (v1.3) Data management plan Open Access View

XLS – D1.2: Data Management Plan – v1.3

D'Auria, Gerardo; Aicheler, Markus; Gazis, Evangelos; Latina, Andrea; Rochow, Regina;

Third update of the XLS Data Management Plan and deliverable D1.2 of CompactLight, published on 31.12.2021, at the end of the project.

Uploaded on February 17, 2022.

August 31, 2021 (v1) Data management plan Open Access View

D8.2. Data Management Plan

Julia Hann; Andreas Morschhauser; Christina Pfeifer; Susanne Resch; Danny Reuter;

DeDNAed Data Management plan report

Uploaded on February 15, 2022.

February 14, 2022 (长津湖之水门桥~線上看(The Battle At Lake Changjin II 2022) 完整版[[4K 1080P]] 在线观看和) Data management plan Open Access View

长津湖之水门桥~線上看(The Battle At Lake Changjin II 2022) 完整版[[4K 1080P]] 在线观看和

长津湖之水门桥~線上看(The Battle At Lake Changjin II 2022) 完整版[[4K 1080P]] 在线观看和;

长津湖之水门桥~線上看(The Battle At Lake Changjin II 2022) 完整版[[4K 1080P]] 在线观看和 长津湖之水门桥(the-battle-at-lake-changjin-2) 完整版本-2022 长津湖之水门桥 完整版 在线观看和下载完整电影HD-1080p視頻質量 [看电影TW] 《长津湖之水门桥》 高清电影-完整版在线观看 长津湖之水门桥 完整版 [2022年电影]—在线观看和下载完整电影 长津湖之水门桥(the-battle-at-lake-changjin-2)在线观看 《免费电影-HD 国语》 高清完整版~1080P! 长津湖之水门桥

Uploaded on February 14, 2022.

June 30, 2020 (v3) Data management plan Open Access View

CoActD1.2: Data Management Plan.

Lombion, Cédric;

DISCLAIMER: The information and views set out in this report are those of the author(s) and do not necessarily reflect the official opinion of the European Union. Neither the European Union institutions and bodies nor any person acting on their behalf may be held responsible for the use which m

DMPs content

Major challenges (qualitative interviews only)

The following major challenges were raised by the interviewees in the qualitative interviews:

- reading and analyzing partner input and turning it into one understandable document, in particular at the beginning of the project, when there was little experience
- where to put the focus and how much details to give – internal procedures or output; also whether to tackle any data or data underlying publications (the latter strongly preferred)
- understanding the technicalities
- how to create the DMP from scratch with zero experience
- Understanding the requirements and convincing partners to submit thorough information (done through peer pressure). This is easier in newer projects since DMPs are more accepted
- Covering all partners, some of them in non-EU countries where different national policies apply (e.g. on protecting vulnerable groups)

<https://phaidra.univie.ac.at/detail/o:1165751>

Argos collection & instructions

- 21 templates (+ more ongoing)
 - 4 in mother language
- Localizations
- OpenAIRE RDM resources
- Admin guides
- Helpdesk

Translators

The screenshot displays the Argos web interface, which is divided into several sections:

- Left Sidebar (Navigation):**
 - Početak:** Moji Planovi, Moji skupovi podataka, Javno dostupni Planovi, Javno dostupni skupovi podataka, Obrasci za Planove, Obrasci za skupove podataka, Korisnici, Uređivanje jezika, Uređivanje vodiča za korisnike.
 - Inicio:** Os meus PGDs, Os meus Datasets, PGDs públicos, Datasets públicos, PGDs, Datasets, Utilizadores, Editor de idioma, Editor do Guia de Utilizador.
- Main Content Area:**
 - Plan upravljanja podacima (Data Management Plan):** Shows details for 'DMP-28feb', including the owner (Završeno), version (Verzija 0), and grant (A smart, hybrid neural-computo device for drug discovery). It lists associated data sets: 'Temporal Binding Window scripts: a lightweight matlab tool to analyse the temporal binding window in a multisensory integration study'. Actions include 'Izvezite' and 'Napravite kopiju'.
 - Plan upravljanja podacima (Data Management Plan):** Shows details for 'DMP-28feb', including the owner (Završeno), version (Versão 0), and grant (A smart, hybrid neural-computo device for drug discovery). It lists associated datasets: 'Temporal Binding Window scripts: a lightweight matlab tool to analyse the temporal binding window in a multisensory integration study'. Actions include 'Exportar' and 'Duplicar'.
- Right Sidebar (Statistics):**
 - Lična upotreba:** 39 Planovi upravljanja podacima, 35 Skupovi podataka, 32 Grantovi, 37 Povezane institucije.
 - Uso Pessoal:** 39 PGDs, 35 Datasets, 32 Grants, 37 Organizações Relacionadas.

DMPs exploitation

The standard does not necessarily highlight and/or solve the problem of DMPs recording a pool of information, *collectively about all project's datasets*, thus posing obstacles in the evaluation and exploitation of individual datasets.

DMPs can be harvested in many ways, depending on how they have been published. They can be found *classified with diverse labels*, such as articles, reports etc. This means that repository providers need to specify the resource types of DMPs¹⁵⁸ in their systems, and promote them widely so that researchers are aware of and use them.

-> **Individual dataset information difficult to identify from others**

-> **Resource_type**

<https://op.europa.eu/en/publication-detail/-/publication/56cc104f-0ebb-11ec-b771-01aa75ed71a1/language-en>

Argos dynamic model & integrations

DMP OpenAIRE-Nexus

Member . Public Version 0 Edited : 6 July 2021 FINALIZED

DOI: 10.5281/zenodo.5075489

Grant

OpenAIRE NEXUS

Researchers

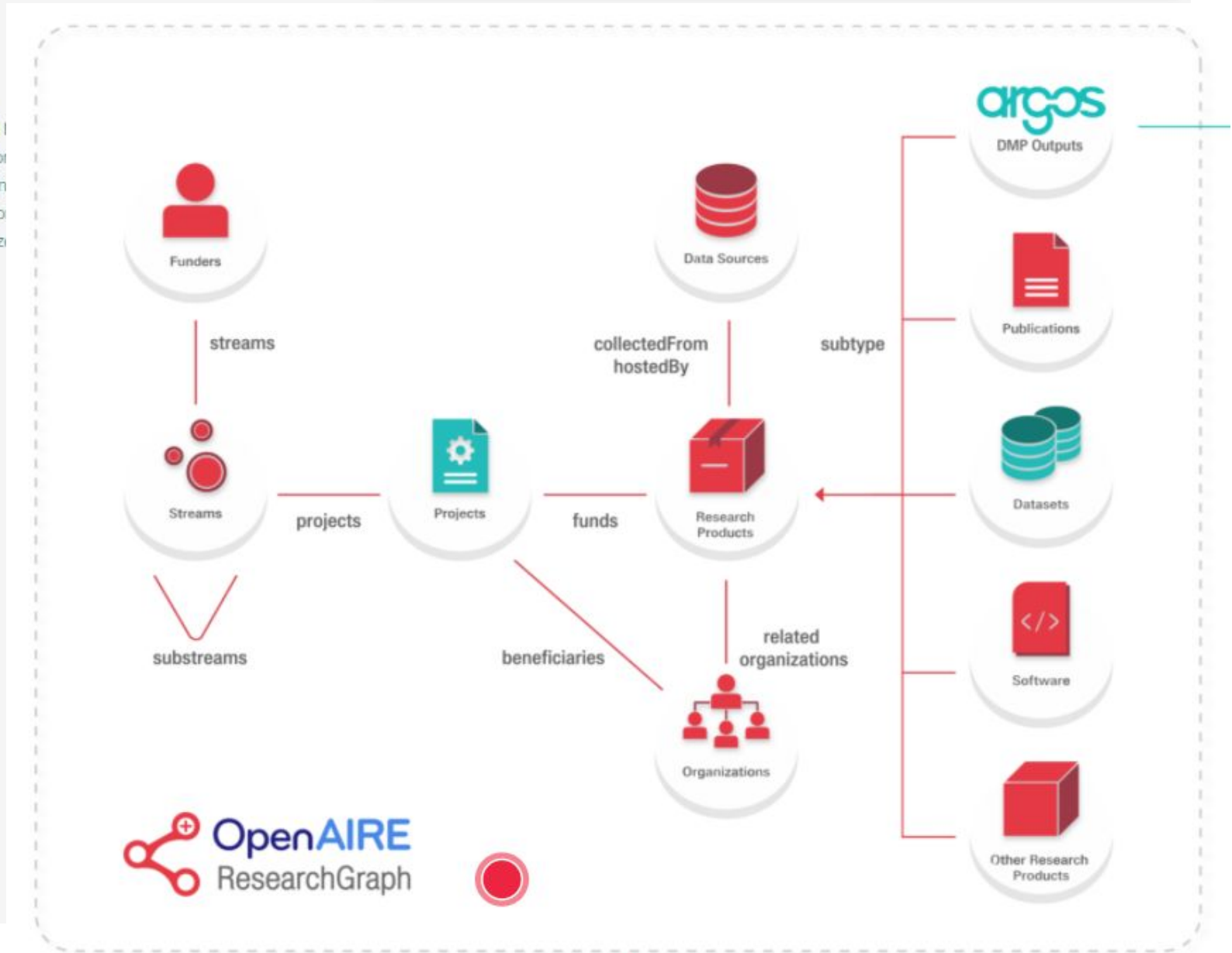
Pedro Principe (orcid:0000-0002-8588-4196), Amelie Bäcker (orcid:0000-0001-6015-2063), Natalia Manola (orcid:0000-0002-3477-3082), Elli Papadopoulou, Paolo Manghi (orcid:0000-0001-7291-3210), Sandro La Bruzzo (orcid:0000-0003-2855-1245), Raphaël Toumoy (orcid:0000-0003-1244-0823), Miriam Baglioni (orcid:0000-0003-4606-7422), Antonis Lempesis (orcid:0000-0003-4483-1976), Andrea Mannocci (orcid:0000-0002-5193-7851), Michele De Bonis (orcid:0000-0002-2785-946X), Claudio Atzori (orcid:0000-0001-9613-6639), Silvio Peroni (orcid:0000-0003-0530-4305), Jochen Schirwagen (orcid:0000-0003-1972-7587), Alessia Bardi (orcid:0000-0002-1112-1292), Harry Dimitropoulos (orcid:0000-0001-9791-587X), Andreas Czuprynski (orcid:0000-0002-3880-0244), Marek Horst (orcid:0000-0002-9038-9333)

Description

OpenAIRE-Nexus brings in Europe, EOSC and the world a set of services to implement and accelerate Open Science. The Data Management Plan for OpenAIRE-Nexus was developed in line with the Guidelines on FAIR Data Management in Horizon 2020, as requested by the EC Data Pilot. It was prepared for each installation that requires such a plan: OpenAIRE Research Graph (CNR, ICM), OpenCitations (UNIBO), Argos (CITE), episceans.org (CNRS), OpenAPC (UNIBI), ScholExplorer (CNR, ICM). The policies define data archiving, preservation, and sharing (i.e. access rights) practices to be adopted.

Datasets used

- OpenAPC
- Argos-data
- Episciences
- OpenCitations
- OpenAIRE Research Graph
- ScholExplorer Data Dump



Data reusability

-> Re-used data
difficult to be
identified

Table 42. Identifying datasets produced by Horizon 2020 projects

ASSUMPTIONS
A1. All datasets reported in SyGMA are produced by the project.
A2. All datasets that reference the project in their metadata (as harvested from OpenAIRE) are produced by the project.
A3. Datasets linked to projects via OpenAIRE's inference system (text-mined) are not necessarily produced by the project.

The first two assumptions are straightforward, in the sense that in both cases there is no incentive to report a dataset-project link unless the former was a project output. With respect to assumption A3, because OpenAIRE aims to **link** projects to research outputs, the inference system is currently *agnostic* towards the semantic relationship between a project and the linked dataset.

Thus, **for those Horizon 2020 datasets not found in EC-Shared or in the harvested OpenAIRE data**, it is not possible to verify that they were created by the projects. For the purposes of this study, we have therefore discarded **1,579 ORG** datasets that are linked to Horizon 2020 only via text mining.

Argos dynamic model & exports

Required

External Datasets

RDA Common Standards

External Datasets Data

Multiple Autocomplete

Input placeholder Text

- Reused dataset
- Produced dataset
- Other

Datasets

Title: REUSED: STEN 2.0: Statistical Toolbox for Electrical Neuroimaging

Template: Horizon Europe

Statistical interface for EEG analysing

Dataset Description

1.1 Reused Data

1.1.1 Are you re-using the described dataset?

Yes

1.1.2 What is the type of described dataset?

Experimental

1.1.4 Why are you re-using the described dataset?

To compare and combine with other data

1.1.5 To whom might this re-used dataset be useful ('data utility')?

Other

2.1 Publications

2.1.1 Does the described output support any scientific publication?

• Yes

• A Comparative Life Cycle Assessment of Electronic Retail of Household Products

• Biodiversity Heritage Library OAI Repository

2.1.2 Is there a data availability statement provided along with the publication?

Yes

3.1 Dataset

3.1.1 Distribution properties

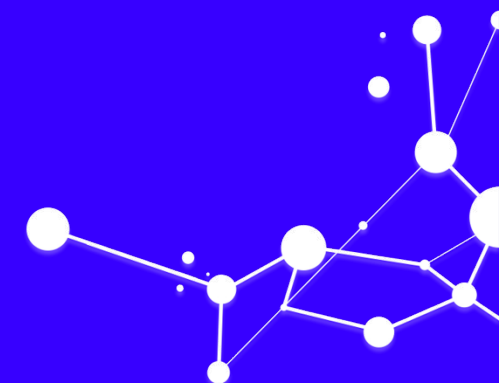
• STEN 2.0: Statistical Toolbox for Electrical Neuroimaging

• Open

• Statistical interface for EEG analysing

• `{id=fileformat:pronom/fmt/484, label=7Zip format, source=, uri=}`, `{id=fileformat:pronom-generic/14095474-5f64-45fe-8523-4c4ef43d20bd, label=7Zip format, source=, uri=}`, `{id=fileformat:pronom-generic/e10936c6-662b-4262-a5dc-a6b545ab27e9, label=BZIP Compressed Archive, source=, uri=}`, `{id=fileformat:pronom/x-fmt/267, label=BZIP Compressed Archive, source=, uri=}`, `{id=fileformat:pronom-generic/74b507cc-40e6-40da-8486-a0b49c67ce55, label=BZIP2 Compressed Archive, source=, uri=}`, `{id=fileformat:pronom/x-fmt/268, label=BZIP2 Compressed`

What's New



Design machine-actionable templates

- Many inputs to create a question
- Long list of input types
 - Boolean, Multiple choice, Free text, custom APIs...
- Collection of static APIs
- Conditional questions
- Multiplicity
 - x the question can be answered with different input
- RDA compatibility

4.1.4 What is the origin / provenance of the dataset?

Description

Required

Select RDA Common Standards

Default Value

Make Conditional Question

Conditional Questions

1 If Value is then show Question

Other If other, please specify 8695addc-0f4f-9a92-c90...

Word List Data

Multiple Selection

Input Placeholder Text

Select

Label: <input type="text"/>	Value: <input type="text"/>
Primary data <input type="text"/>	Primary data <input type="text"/>
Label: <input type="text"/>	Value: <input type="text"/>
Secondary data <input type="text"/>	Secondary data <input type="text"/>
Label: <input type="text"/>	Value: <input type="text"/>
Other <input type="text"/>	Other <input type="text"/>

+

Required

Free Text RDA Common Standards

Default Value

Make Conditional Question

Free Text Data

Input Placeholder Text

If other, please specify

Preview

What is the origin / provenance of the dataset?

Select *

If other, please specify

Please Specify

Provide additional information or justification about your selection



Integrations

Automate and connect data workflows



- Use the OpenAIRE and EOSC APIs & configure your own APIs
- Integrate with your local repository to publish DMPs
- Automate the creation of dataset profiles in DMPs & establish direct communication with repository managers
- Enrich the OpenAIRE Research Graph with contextualized information for your DMPs and create links between DMPs, research outputs and semantics
- Send contextualized information of DMPs to your OpenAIRE Monitoring Dashboard, define indicators & exploit DMPs evaluation, uptake and RDM trends
- Integrate with your discovery service & provide visibility to DMPs

Prefill DMPs

Initialize your Dataset ×

Select the dataset from Zenodo to automatically retrieve answers to some questions in your template or start by answering the questions manually.

Manually OR Prefill

Dataset Template

Horizon Europe

Prefilled Dataset

Search a Dataset

Next

Limit researchers' time and effort & provide extra incentives:

1. for the DMP process itself,
2. for sharing data even from the beginning of the project.

! Works BEST with machine actionable Templates

To be expanded with more providers in 2022.

More opportunities

- **Create qualified links between research outputs.**
- **Add many distributions per dataset**
 - This part contains information that the standard requires to be provided in a nested structure, hence we had to alter the structure of the official HE template and cherry pick this information from other parts where they are found.

2. LINKS BETWEEN OUTPUTS

2.1. PUBLICATIONS

Please complete this section for datasets that are important to validate scientific results described in publications.

Note: The European Commission offers Horizon Europe beneficiaries [Open Research Europe \(ORE\)](#), an open access publishing platform with no publishing fees. ORE is offered as an additional publishing option to Horizon Europe beneficiaries. When ORE is the selected publishing venue, all requirements for open access to scientific publications are fulfilled, as ORE deposits publications in the all-purpose repository Zenodo.

2.1.1 Does the described output support any scientific publication?

Create the links between scientific publications and research data.

Yes No

Select the publication

List of values provided by external source(s)

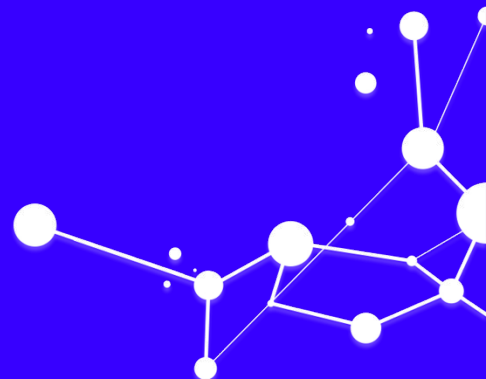
Select the journal and the literature repository or pre-print server where the publication can be found

List of values provided by external source(s)

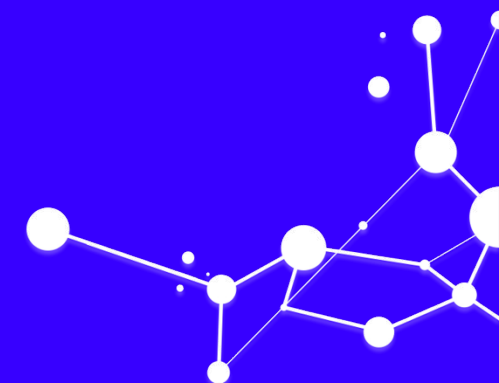
[+ Add more](#)



Demo



Useful Material



NEW to use!

2.3 Add Question(s)

Add one or more questions in the Dataset Template under your Sections (sub-sections etc).

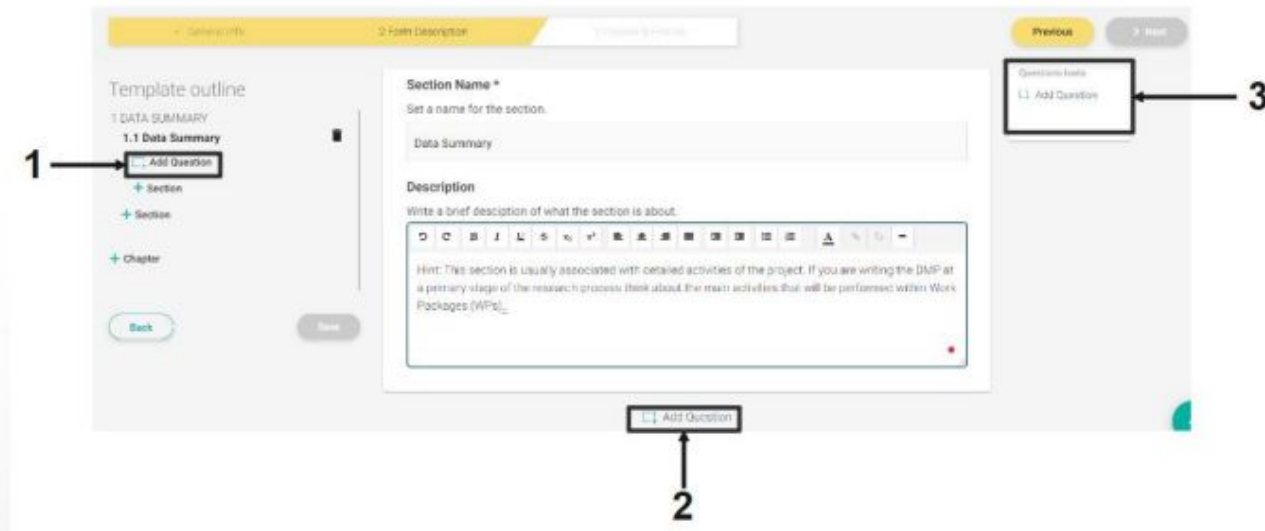


Figure 15. Add a new Question

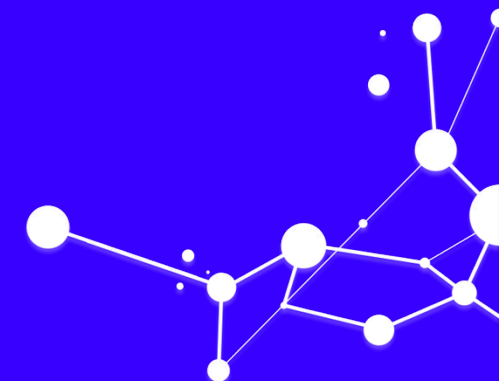
You can add question(s) by selecting *add question* from:

1. the Template Outline (left side of the screen),
2. the button below the Section panel (when hovering over the center of the screen),
3. the Question tool box (right side of the screen).



<https://argos.openaire.eu/splash/resources/user-guide.html>

Questions?





@openaire_eu
#OpenAIRE-Nexus

THANK YOU

Eli Papadopoulou | Georgios Kakaletris
elli.p@athenarc.gr | gkakas@athenarc.gr

